

Fargo-Moorhead Metropolitan Feasibility Study

***Presentation for FMM Work Group
January 13, 2011***



**US Army Corps of Engineers
BUILDING STRONG®**



ND Diversion Alignment: East or West?

- ✓ Draft Report – June 2010
 - ✓ Recommended East Alignment
 - ✓ Corps indicated to Work Group that East or West could be considered in the future

- ✓ Draft report comments received by August 9, 2010

- ✓ Additional modeling efforts to west of West Fargo, December 2010.

- ✓ Request to local sponsors for technical justification, December 2010.



Executive Order 11988 - Floodplain Management

E.O. 11988 was enacted in 1977 "in order to avoid to the extent possible the long and short term adverse impacts associated with the occupancy and modification of floodplains and to avoid direct or indirect support of floodplain development wherever there is a practicable alternative."

13 Jan 2011

3



Draft EIS Comments related to E.O. 11988

✓ EPA –

“The indirect impact analysis should also include the provisions of Executive Order 11988. Using the procedure described in “Further Advice on Executive Order 11988 Floodplain Management”, Interagency Task Force on Floodplain Management, 1987, the indirect impact analysis should address induced development in the floodplain and in flood storage areas.”

13 Jan 2011

4



Draft EIS Comments related to E.O. 11988

✓ FEMA –

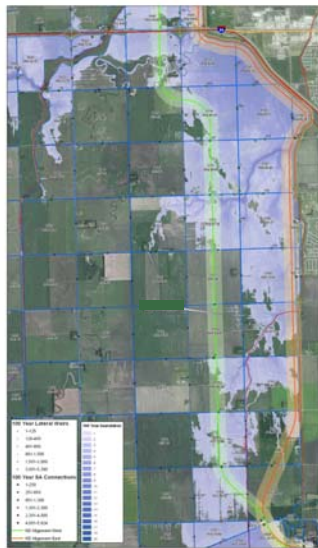
“...the documents can be improved by identifying measures to reduce the alternatives’ indirect support of future development in the floodplain... Section 10 of USACE Regulation No. 1165-2-26 (March 30, 1984)...“consideration shall be given to deletion of separable segments of a plan when such segments protect undeveloped land and would likely induce development in the flood plain for which another practicable non-flood plain alternative may exist.”

13 Jan 2011

5



Sheyenne River Floodplain



1% Chance event



904.8'

0.2% Chance Event



905.5'

WAPA Substation 907-909'



1

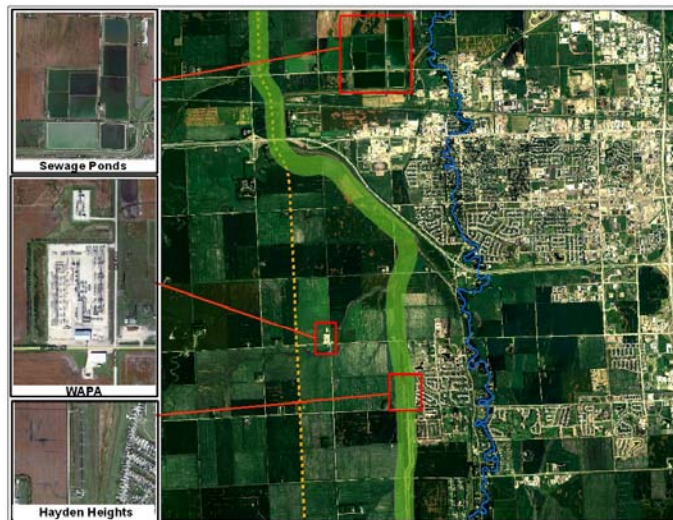
6

Possible Environmental Impacts of West Alignment

- ✓ Additional Floodplain Impacts
 - ✓ 1.0 percent chance (100-year) - 9.2 square miles
 - ✓ 0.2 percent chance (500-year) - 10.8 square miles
 - ✓ Unknown downstream impacts

- ✓ Other Impacts
 - ✓ Assumed to be fairly similar for both alignments
 - ✓ Wetlands
 - ✓ Forested areas
 - ✓ Etc.

Local Information provided



Local Information Provided to Date

- ✓ West Fargo Sewage Lagoons
 - ✓ Benefited by both alignments

- ✓ WAPA Sub-station
 - ✓ Primary problem is access during floods
 - ✓ Benefited by West alignment
 - ✓ Other possible alternatives need to be considered
 - ✓ Possible mitigation areas
 - ✓ Coordinating with WAPA and local utilities

- ✓ Hayden Heights Development
 - ✓ Both East and West alignments could go around development

Recommended Path Forward

- ✓ Feasibility Report and EIS will keep the ND East Alignment as recommended plan.
 - ✓ **Sheyenne River floodplain to remain unchanged near existing diversion.**

- ✓ Willing to continue discussions and analysis during the design phase of the study. Any alignment shift must:
 - ✓ **Comply with NEPA requirements.**
 - ✓ **Be compliant with EO 11988.**



Notice of Intent

- ✓ The Corps recently published a Notice of Intent to prepare a Supplemental Draft Environmental Impact Statement and Feasibility Study to further evaluate impacts of the project and the potential measures to mitigate those impacts.

- ✓ Comments on the scope of the Supplemental Draft EIS/FS are due before January 26, 2011.

13 Jan 2011

11



F-M Metro Study Timeline:

- ✓ Feb/Mar 11 Meetings in impacted areas (up or downstream)
- ✓ 27 Apr 11 Supplemental Draft EIS to EPA for publication
- ✓ May 11 Public Meeting(s)
- ✓ 20 Jun 11 Complete 45-day NEPA public comment period
- ✓ 1 Aug 11 Division Engineer's Transmittal
- ✓ 7 Sept 11 Submit Draft Chief's Report and Final EIS to EPA for publication
- ✓ 1 Dec 11 Sign Chief's Report

19 Jan 2011

12



F-M Metro Information

The screenshot shows the website for the Fargo-Moorhead Feasibility Study. At the top, there are logos for the City of Fargo, the International Water Institute (IWI), and the City of Moorhead. Below the logos is a photograph of a construction site with snow on the ground. The main heading is "Fargo-Moorhead Feasibility Study". On the left is a dark blue navigation menu with white text: "About", "Project Goals", "Project Description", "Upcoming Meetings", "Past Meetings", and "Contacts/Comments". To the right of the menu, under the heading "Feasibility Study:", there are three red links: "Community Leader Meeting 11-18-2010", "Proposed ND Diversion Alignments 11-19-2010", and "Draft Feasibility Report and Environmental Impact Statement (25 MB large - It takes some time to open!)"

<http://www.internationalwaterinstitute.org/feasibility/index.htm>